

Dwell, May/June 2018.

dwell

At Home in the Modern World

Will Arnett's Home
The Hollywood Actor
Opens His Doors

Shipping Containers
Building a House
Out of Boxes

New Horizons

Find What Works for You

dwell.com

May / June 2018
Display until July 9, 2018

\$7.99 U.S. / \$8.99 Canada



A glass tower defines
the exterior of Will Arnett's
prefab-hybrid home.

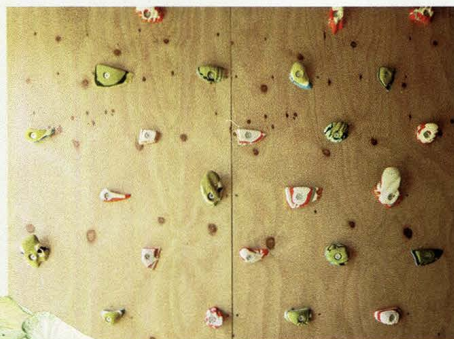


27



Yield's 8-inch planter, spun from a single piece of copper, adds a metallic accent to outdoor spaces.

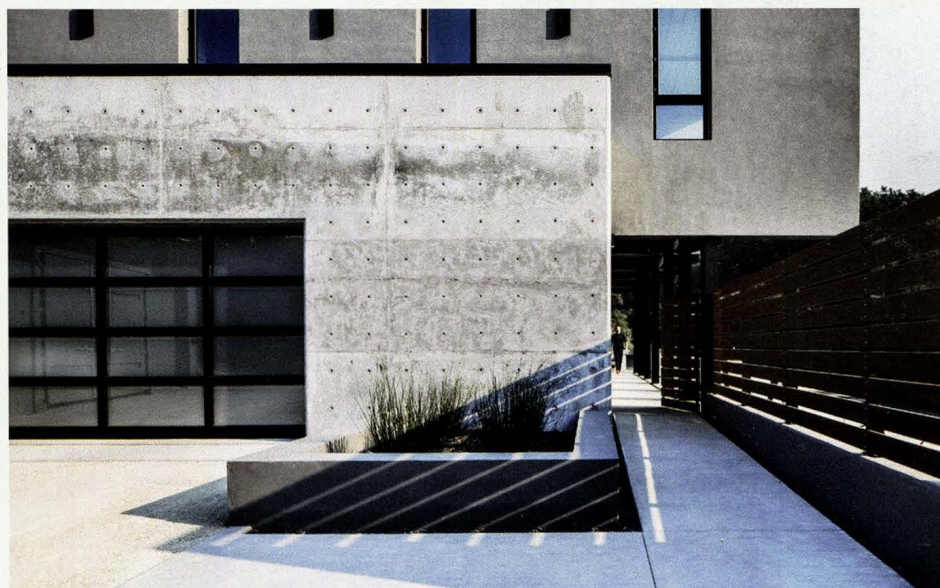
120



48



54



CONTENTS

departments

15 Editor's Letter

18 Community

134 Sourcing

See it? Want it? Need it? Buy it!

136 One Last Thing

Jonathan Adler recounts the tale of an oddly lovable sculpture.

27 Modern World

Our special section focuses on outdoor living, with a round-up of our favorite products for the garden, patio, beach, and beyond, plus landscaping tips from experts across the country. An essay explores the uncertain future of building in disaster-prone areas, and Nice Mod celebrates a water park in San Antonio that makes outdoor fun accessible to children with disabilities.

48 Process

L.A. company Portola Paints & Glazes outlines the steps behind its signature limewash, a product long in the making.

TEXT BY Kelly Vencill Sanchez
PHOTOS BY Jamie Chung

54 Prefab

Recycled shipping containers form the bulk of an eco-conscious family's home in the hills of Santa Barbara.

TEXT BY Laura Mauk
PHOTOS BY Jason Rickon

62 Small Spaces

A design duo helps a New York attorney maximize his apartment on Union Square.

TEXT BY Ann Binlot
PHOTOS BY Matthew Williams

68 Conversation

Design legend Ruth Adler Schnee talks about her seven-decade career and the work she continues to do today.

TEXT BY Deborah Lubera Kawsy
ILLUSTRATION BY Sam Kerr

74 Off the Grid

In the desert north of Joshua Tree National Park, a pair of tiny rustic cabins proclaim their energy independence.

TEXT BY Kelly Vencill Sanchez
PHOTOS BY Sam Frost

116 Outside

A landscape architect curates a native-plant mix for a meadow circling a house in the Hudson Valley.

TEXT BY Tovah Martin
PHOTOS BY Kindra Clineff

120 Renovation

An expansive rear addition to a 19th-century cottage makes room for a growing family in a coastal British town.

TEXT BY Iain Aitch
PHOTOS BY Nick Ballon

Get a full year of Dwell at dwell.com/subscribe.

New Horizons

Every year, when the weather gets warm and new buds start to sprout, Dwell steps outside the home and dedicates a few pages to the unbuilt environment and the natural world. The Outdoor section is usually a place for celebration, full of bright ideas for green thumbs, immersive landscape environments, and roundups of products that maximize seasonal recreation. But this time, things feel different. On the heels of last year's vicious hurricane and wildfire seasons, it's hard to enjoy the outdoors with the same care-free abandon. From the rolling hills of Northern California to the rainforest of Puerto Rico, nature no longer feels like a place to retreat, but a force to retreat from.

Of course, this is not a new phenomenon. Scientists have been warning us for years that climate change would lead to worse and more frequent natural disasters—one reason we're adamant that responsible architecture consider its carbon footprint as a first priority—yet in 2017, the reality of rising tides and climbing temperatures became intensely personal for millions of Americans for the first time.

In Dwell's own backyard, our beloved wine country in Sonoma, Napa, and Lake counties experienced tragic fires last fall. Waking up to the smell of smoke in October and seeing the fire engines race northward are memories etched in my mind. Can architecture solve all of these problems? Of course not, but we can pitch in and use smart design to build with resilience.

This year, in addition to showcasing the latest alfresco furnishings and offering regional gardening advice, the Outdoor section (p. 27) includes an essay on the challenges of knowing where exactly it is safe to build. We're also proud to present a house made largely of recycled shipping containers in Santa Barbara (p. 54), an off-the-grid homestead in Joshua Tree (p. 74), and a property on a meadow in New York where the landscape architect strived to use native species (p. 116).

As each of these examples illustrate, every individual can play a part. ■

Lara Deam, Founder, CEO
lara@dwell.com / @laradeam

The Container Score

Five shipping containers find new purpose as a home in Santa Barbara.



Passersby seeing its parged gray plaster facade would have no clue that the second story of Bret and Dani Stone's home is made mostly of shipping containers. A crane stacked the units on top of the

concrete-and-steel superstructure in a single day in late 2016. Architects Clay Aurell and Josh Blumer, veterans of the medium, sourced the recycled boxes from cor10 Studios.

prefab

The home that architects Clay Aurell and Josh Blumer, of AB Design Studio, devised for Bret and Dani Stone on a sloping site in the foothills of Santa Barbara, California, is nothing short of a triple-threat: It's largely prefabricated; it incorporates recycled material; and it presents as an elegant display of modernism.

Indeed, the house has an impressive list of attributes, but its most compelling element is the use of five shipping containers. "We've been designing with shipping containers for a very long time," Aurell says. "For us, it's about going back to the modernist movement and identifying exactly what people need to be comfortable, without adding a bunch of square footage and fluff." It's also about accomplishing that authenticity in the most >

On the other side of the entry gate, the containers' raw corrugated shells are exposed (above) and topped with a gravel-ballasted roof that juts past the envelope to limit solar gain. The bedrooms and bathrooms are housed

within the 40-by-8-foot boxes (below right), separated by a skylit corridor (below). A 14 Series pendant by Omer Arbel for Bocci hangs in the stairwell. The desk at the window was designed by the architects.



"From the street, the home looks like a pretty standard box-on-box design. But as you step through the gate, you become aware that there is something more to it." JOSH BLUMER, ARCHITECT



prefab



environmentally efficient way possible. “Working with shipping containers is a huge opportunity in terms of sustainable building practices,” Blumer says. “Any time you recycle, it’s one less group of trees chopped down or landscape altered.”

Bret chose AB Design Studio for exactly that sensibility. As an environmental lawyer, he’s an ideal client for a shipping container home. “I wanted something that speaks to my principles,” he says. “I don’t like wasting anything. I wanted to build something that was repurposed out of an otherwise useful product.”

Aurell and Blumer’s design began with the concept of using the containers to hold only the sleeping areas and baths for the couple and their two children. They placed

four containers on top of a pavilion-like construction made of glass, steel, and concrete that they created as the lower level of the house. “They were craned in the way you’d crane in the modules of a traditional prefab,” Aurell says.

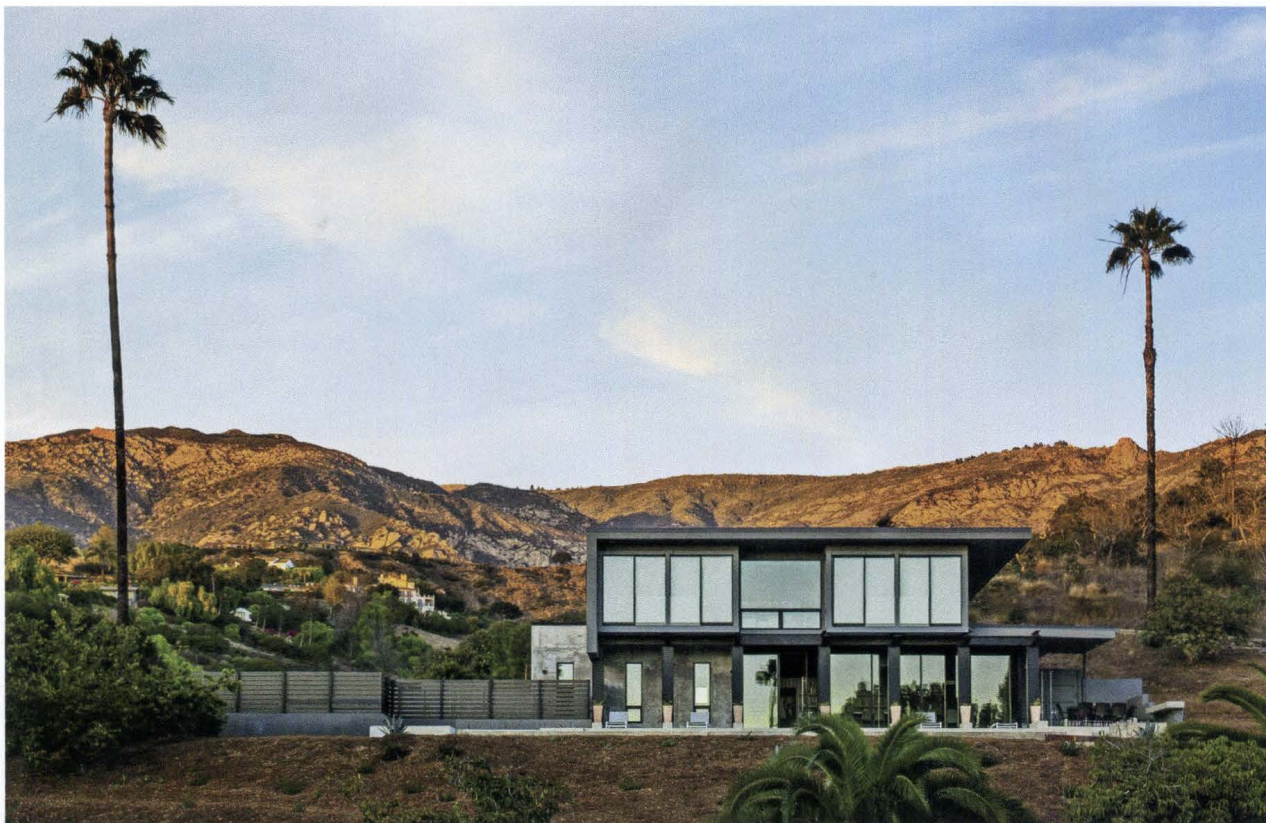
The first floor, which holds the kitchen, the dining area, and an expansive living room, is laid out in an open plan and features a fifth, 20-foot-long, container that was converted into a large pantry. For furnishings, interior designer Sarah McFadden gravitated toward rich textures and curved silhouettes. “The architecture is so linear and has mostly right angles, so it was important to bring in warmth,” she says. The communal area ties to the landscape via glass walls, two of which slide >



The site-built lower level, erected by Barber Builders, connects to the terrace via corner glass pocket doors (top). The patio furniture is from CB2 (above). For the open-plan first floor, interior designer Sarah McFadden paired a round Mexican olive wood table by Taracea with Nuvola chairs covered in ash gray leather (left). A half-sized container, painted in Smoke Embers by Benjamin Moore, serves as a pantry/scullery.

prefab

“The big surprise that delights everybody is that there’s a shipping container literally just sitting in the corner when you come in, like a box that was left behind.” JOSH BLUMER



open to join interior space to the pool terrace and the lush canyon beyond.

While the south facade is open to the natural surroundings, the front containers are covered in gray plaster on the street side. “We oriented the house so it would be heated and cooled passively,” Blumer says. “But the plaster also helps to insulate the metal from the intense heat of the western sun.” Bret increased the home’s sustainability even more with rooftop solar panels.

The Stones’ residence has a grand quality, but it’s less than 2,500 square feet. “We scaled this house down from what the clients originally wanted,” Aurell says. “Once we did, we were able to figure out how to integrate the containers into a modernist design. That was a goal, for the containers to be part of the experience and not just covered up.” ■

Working with Ashley & Vance Engineering, AB Design Studio realized the 2,435-square-foot house in 19 months. Huge expanses of glass from Western Window Systems face the native terrain,

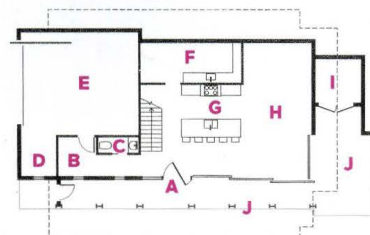
overseen by Green Landscapes. Windows throughout are strategically placed to ventilate the home passively. “I’m not a fan of having the windows closed and the AC on,” says Bret.

Shipping Container Residence

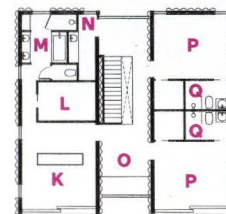


ARCHITECT **AB Design Studio**
LOCATION **Santa Barbara, California**

A Entrance	F Pantry	L Master Closet
B Mudroom	G Kitchen	M Master Bathroom
C Powder Room	H Living/Dining Area	N Laundry
D Storage	I Mechanical Room	O Study
E Garage	J Patio	P Bedroom
	K Master Bedroom	Q Bathroom



Lower Level



Upper Level

The products, furniture, architects, designers, and builders featured in this issue.

24 Everything Is Illuminated

Ardesign
ardesignnyc.com
John Fasano Contracting
fasanocontracting.com
Bieber Windows
beiberusa.com
Metal Work by Eidan
Dehri 732-616-0458
24 Bed from West Elm
westelm.com; **pendant by Flos, vintage**
25 Nelson Saucer
Bubble pendant by George Nelson for Herman Miller
hermanmiller.com; **sofa by West Elm**
westelm.com

54 The Container Score

AB Design Studio
abdesignstudio.com
Barber Builders
barberbuilders.com
Structural engineering by Ashley & Vance
ashleyvance.com
Electrical engineering by JMPE jmpe.com
Greens Landscape
greenslandscapedesign.com
Interior design by McFadden Group
mcfaddendesigngroup.com
56 14 Series pendant by Omer Arbel for Bocci
bocci.ca; **custom desk by AB Design Studio**
abdesignstudio.com
58 Patio furniture from CB2 cb2.com; **Estero round dining table by Taracea** taracea.com; **dining chairs and bar stools by Nuvola**
overstock.com
60 Windows by Western Window Systems
westernwindowssystems.com
62 Pegged for Greatness
StudioKCA
studiokca.com

DSC Construction
dsconstruction.us
MEP engineering by IP Group
ipgroupengineering.com
Millwork by PHF Woodwork
phfwoodwork@yahoo.com

62 Executive armchair by Charles and Ray Eames for Herman Miller hermanmiller.com
64 Solo sofa by Antonio Citterio for B&B Italia beitalia.com; **sofa pillow fabric by Pollack** pollackassociates.com; **paper lantern by Isamu Noguchi** noguchi.org; **354 I-Beam side table by Matthew Hilton for De La Espada** delaespada.com; **Bamboo Ikat rug from The Rug Company** therugcompany.com; **Raleigh armchair by Jeffrey Bernett and Nicholas Dodziuk for DWR** dwr.com; **1930s Martini side table from Restoration Hardware** restorationhardware.com; **dining chairs and bar stools from Crate and Barrel** crateandbarrel.com; **custom peg lights by Studio KCA** studiokca.com
66 Concrete countertops by Concrete Works East concreteworkseast.com; **Modena island hood by Zephyr** zephyronline.com; **bench fabric by Knoll** knoll.com

74 Joshua Tree Unplugged

Malek Alqadi
follyfolly.com
Tao Energy
760-401-6125
A&D Plastering
310-538-1577
74 Alder + Asher chair
shopalderandash.com;

Park Style grill by Guide Gear sportsmansguide.com

76 Vallentuna sofa, Martin dining chairs, and Tingsryd cabinets all from IKEA ikea.com; **Big Dot cushions by Lorena Canals** lorenacanal.us; **Snaregade rectangular table by Norm Architects for Menu** store.menudesignshop.com; **Willmann vase by Hanne Willmann for Edit Collective** edit-collective.com; **refrigerator by EcoSolarCool** ecosolarcool.com;

kitchen faucet by Vigo vigoindustries.co; **Oliver wall light by Gabriel Teixido for Carpyen** ylighting.com; **Stonewashed Belgian linen bedding from Restoration Hardware** restorationhardware.com; **sink by Kraus** kraususa.com; **Trinsic lavatory faucet by Delta** deltafaucet.com
78-79 Askholmen table and chairs from IKEA ikea.com; **bio-ethanol fireplace from Anywhere Fireplace** anywherefireplace.com
80 Solar-powered fresh

air skylight by Velux
veluxusa.com

82 Mom and Pop Restore

Ken Tanaka Studio
kentanastudio.com
Nakao Construction
310-753-3660
FC Consulting Engineers
fccei.com
Groundswell Landscape
groundswellland.com
All oak furniture by Takuhiro Shinomoto
tortoiselife.com
82-83 Three Sofa de Luxe by Jasper Morrison for Cappellini cappellini.it;

sliders by Western Window Systems
westernwindowssystems.com; **pendant light, vintage; leather poufs from DOSA** ok-the-store.myshopify.com; **curtains from Restoration Hardware** restorationhardware.com
84 Countertops by Richlite richlite.com; **appliances by Subzero-Wolf** subzero-wolf.com; **86-87 Mobile by Shigeki Fujishiro** shigekifujishiro.com; **birdcage by Keiichi Sumi** tortoiselife.com; **Light Capsule pendant by Peter Ivy** tortoiselife.com
88 Bench by Alma Allen, vintage

90 The Model Home

Reddymade Architecture and Design
rmdny.com
Living Homes
livinghomes.net
Valle Reinis Builders
vallereinis.com
Civil engineering by CM Peck cmpeck.com
Fiore Landscape Design
fiorelandscapedesign.com
Cabinetry by Luca Lanzetta
lucalanzetta.com
Modular Fabrication by Silvercreek Industries
silver-creek.net
Artwork by Toyon from Arts toyonarts.com
92-93 String lights by Michael Anastasiades for Flos flos.com; **1UWV Low Profile luminaire by Cedric Hartmann** cedrichartman.com; **Dorica floor lamp by Jordi Miralbell and Mariona Raventos for Santa & Cole** lumens.com; **Mori pendants by Rich Brilliant Willing** richbrilliantwilling.com; **45°/Tavolino tables by**

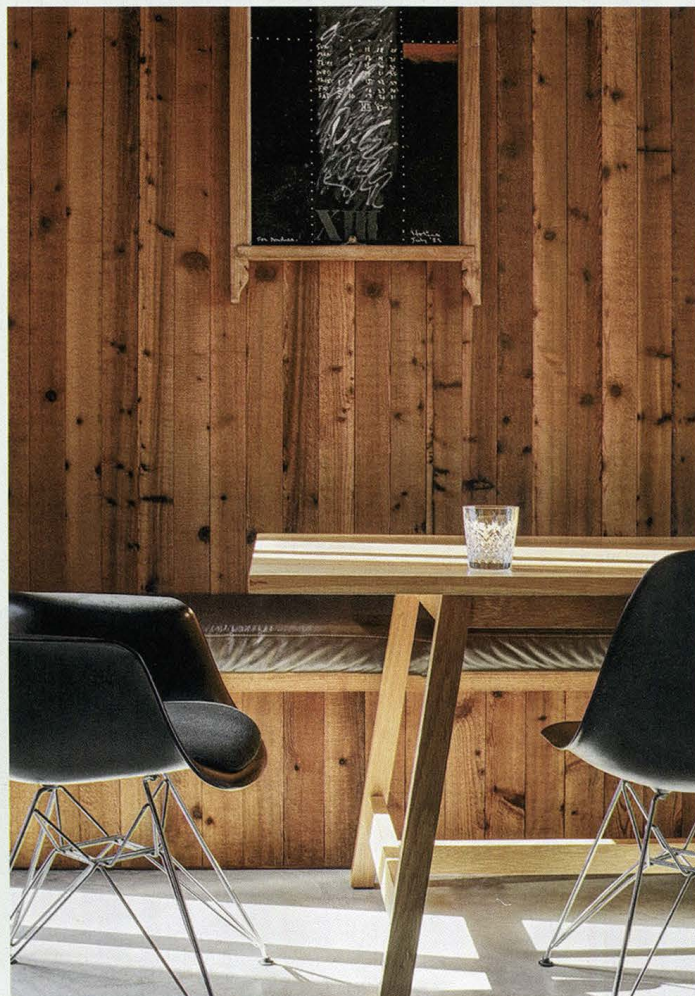


PHOTO: PIPPA DRUMMOND